

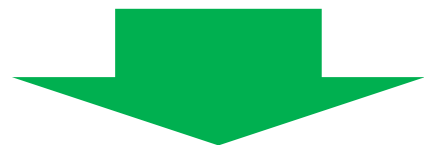
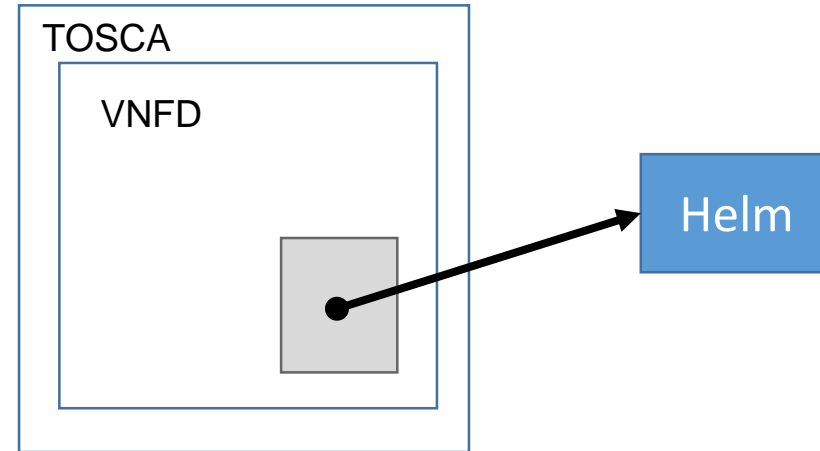
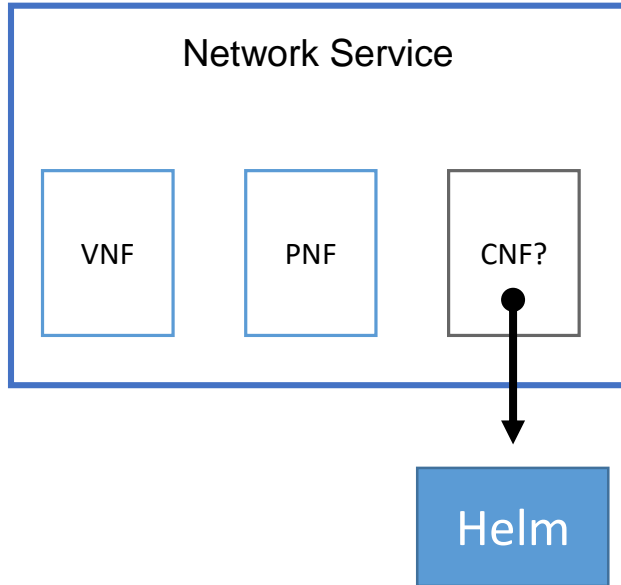
REQ-341 – CNFO – Next Steppingstones Towards CNF In Production Deployments

Lukasz Rajewski (Orange)

Seshu Kumar M (Huawei)

14.10.2020

ONAP - ETSI CNF model Alignment



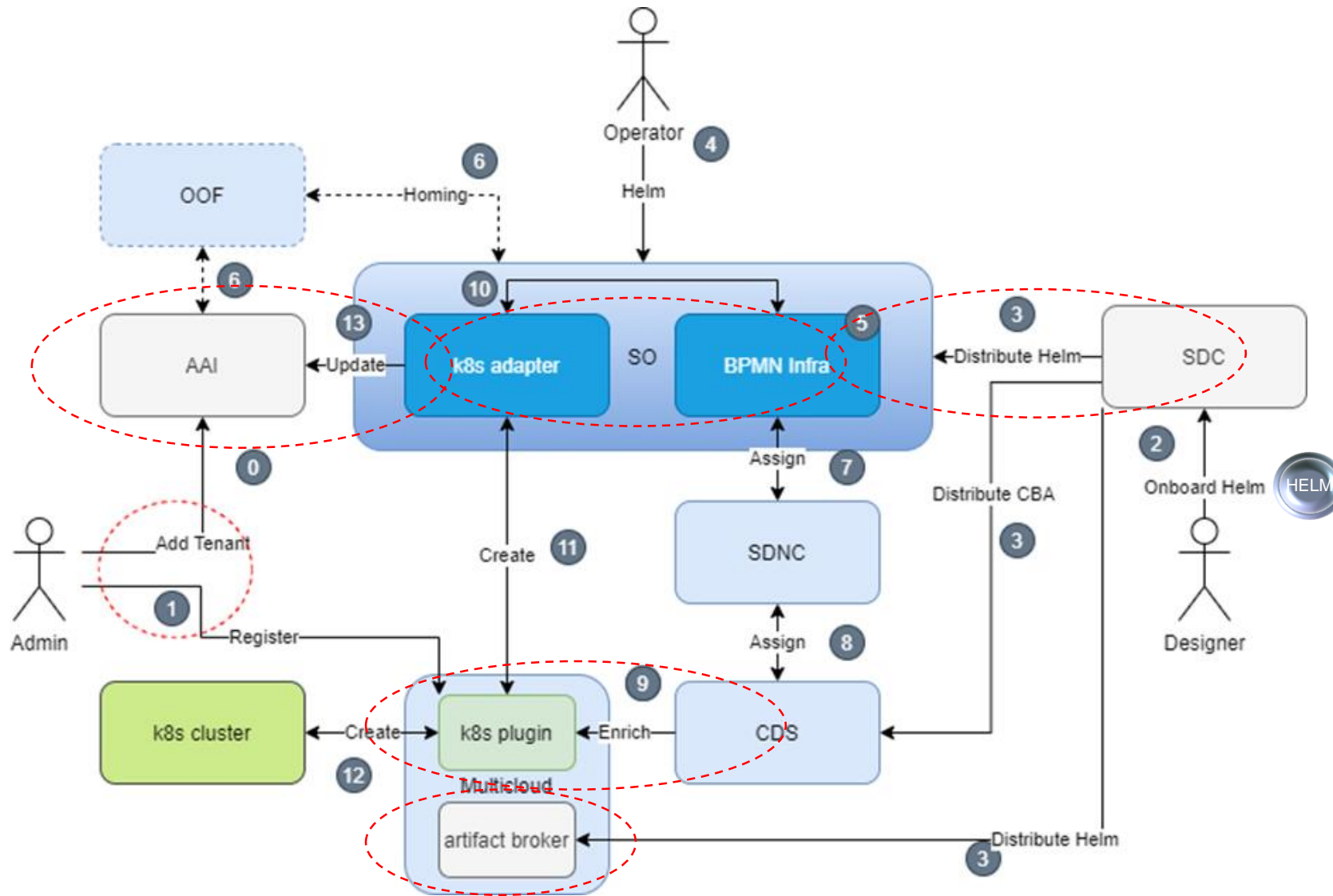
Integration of Native (K8s Adapter) with ETSi (SOL003 Adapter) paths in SO



Design/AAI CNF Model

How the ETSI CNF AAI model will look?

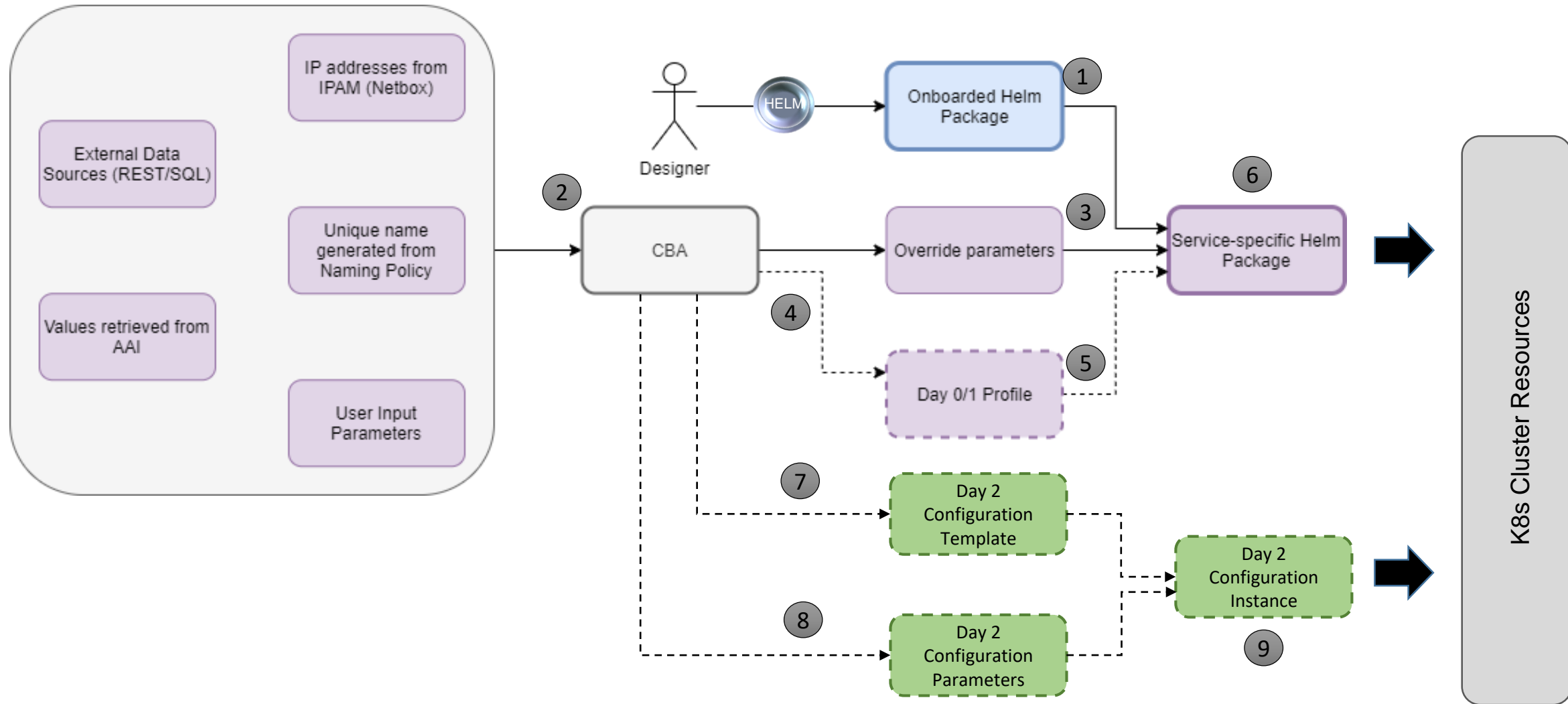
Guilin - K8s Adapter (Helm) Flow Day 0/1



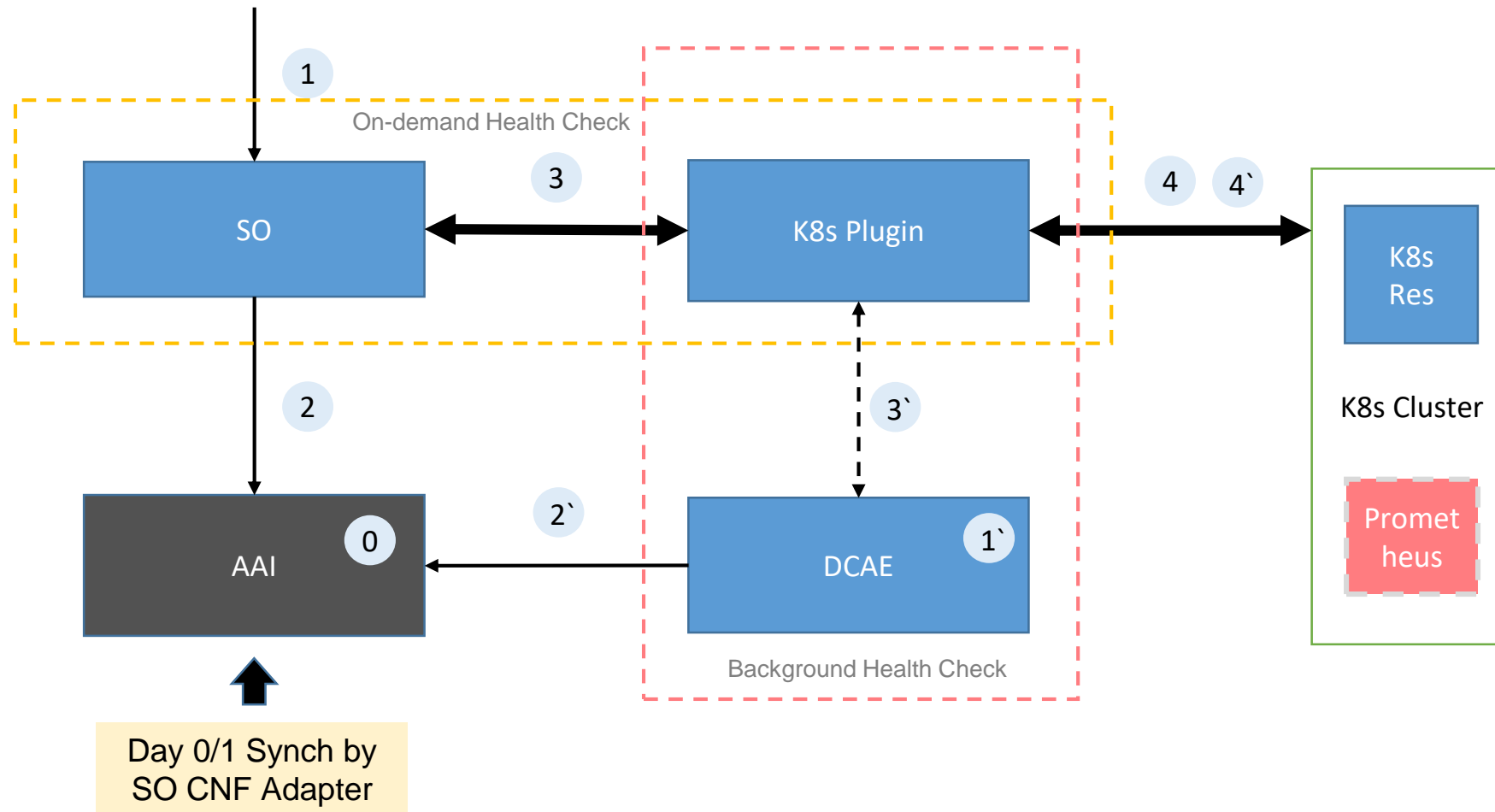
Focus on Native Day2 Operations

- AAI model changes
- SO AAI Data Update
- SO CNF Status
- SDC Distribution
- Helm Validation
- K8s Plugin – v2 APIs
- Native Day2 for CNF in CDS

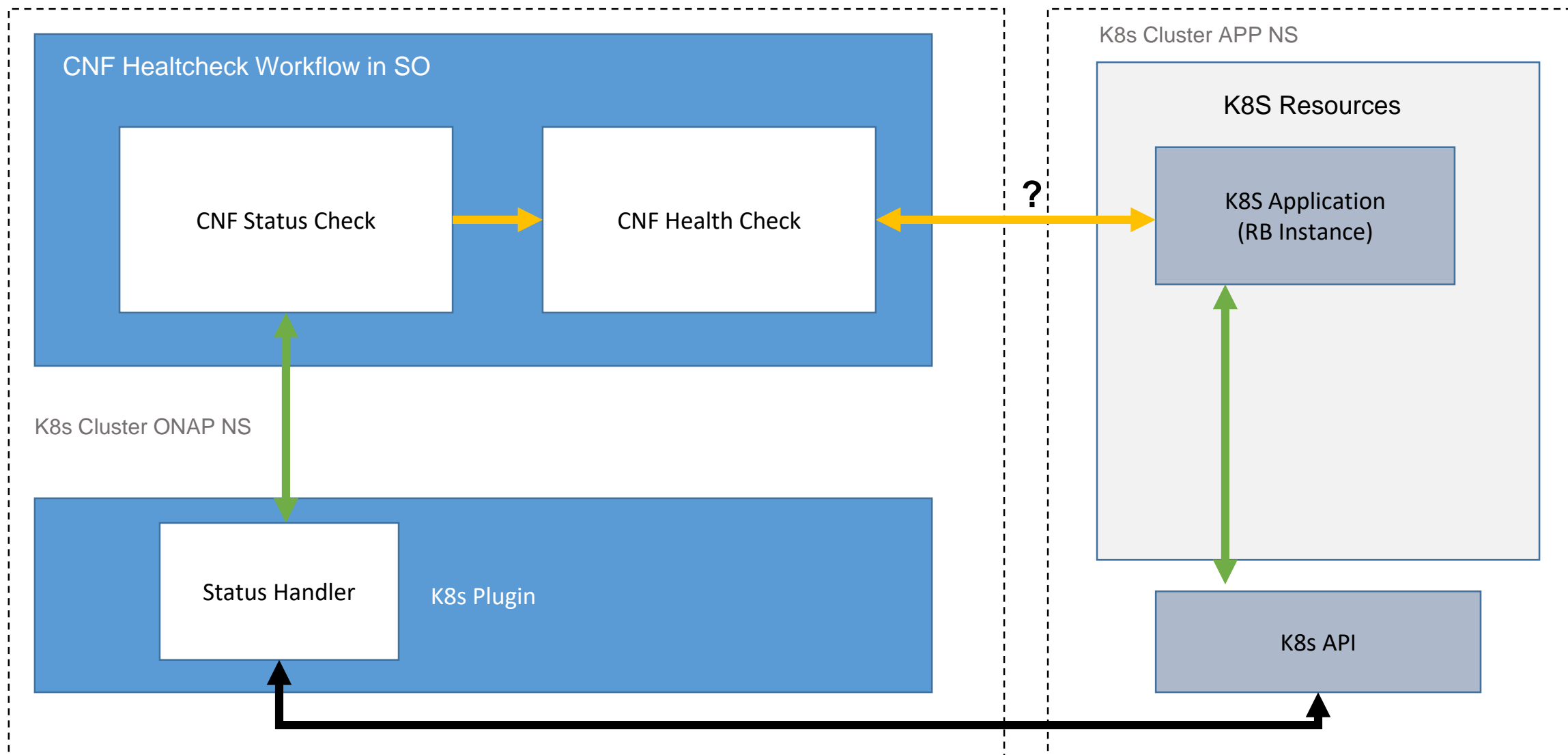
Helm Package Day 0/1 + Day2



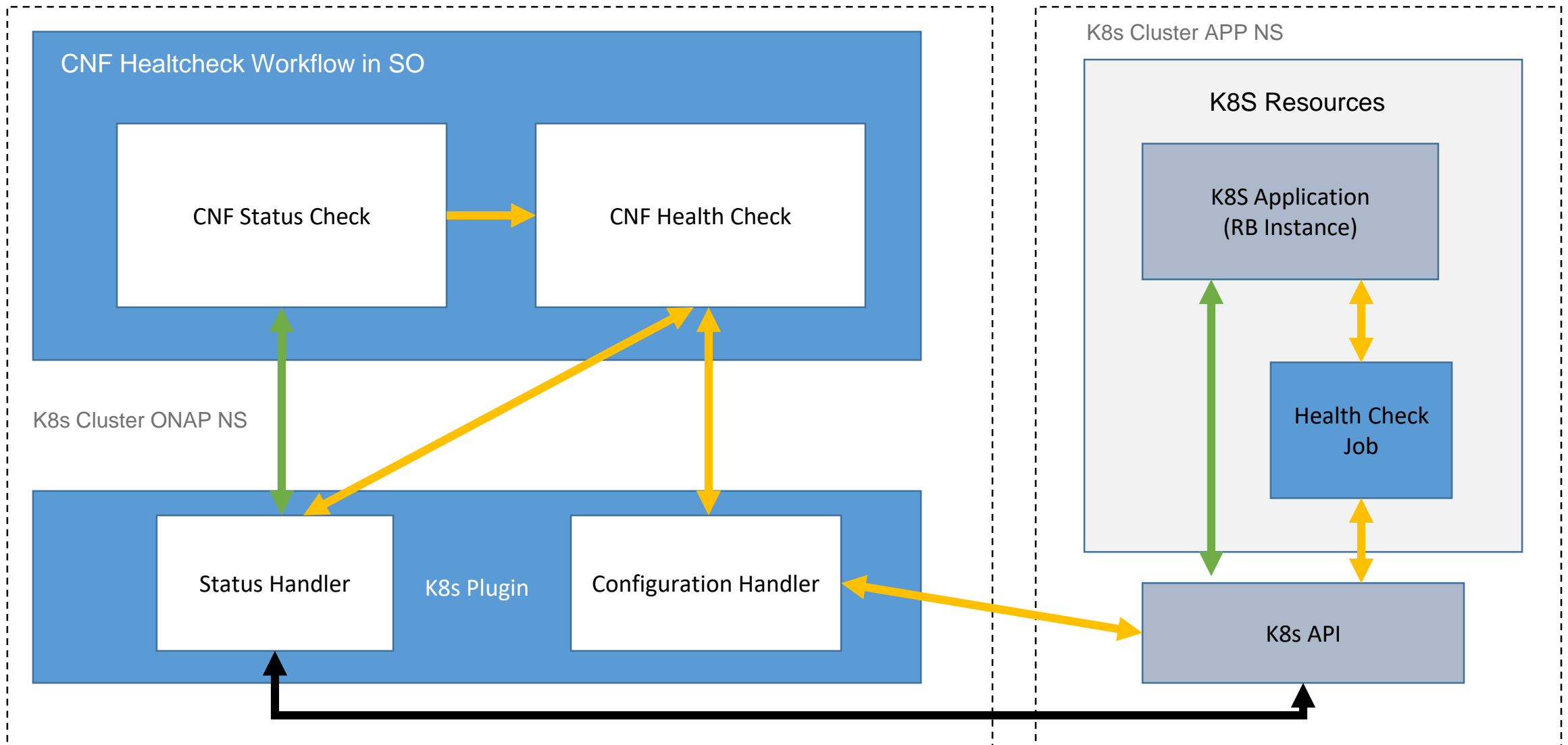
Day2 CNF Health Flow - ONAP



On-Demand CNF Health Check – Challenge



On-Demand CNF Health Check – Proposal



Proposed scope for REQ-341 - Honolulu+ (1)

REQ-341

- SDC Enhancements
 - Continuation of native Helm support changes
 - Helm validation [stretch]
- AAI model changes
 - K8s resource type created from helm package -> similar role to vserver object
 - Snapshot of Status API result in AAI
- AAI API - Exposure of Status API result with conversion to JSON
- SO Changes
 - SO E2E API Improvements
 - SO CNF Adapter
 - Status API in CNF Adapter
 - AAI synchronization after each change -> Notification based
 - SO Integration ETSI Flow <- We need to make sure the flow will coexist with REQ-334



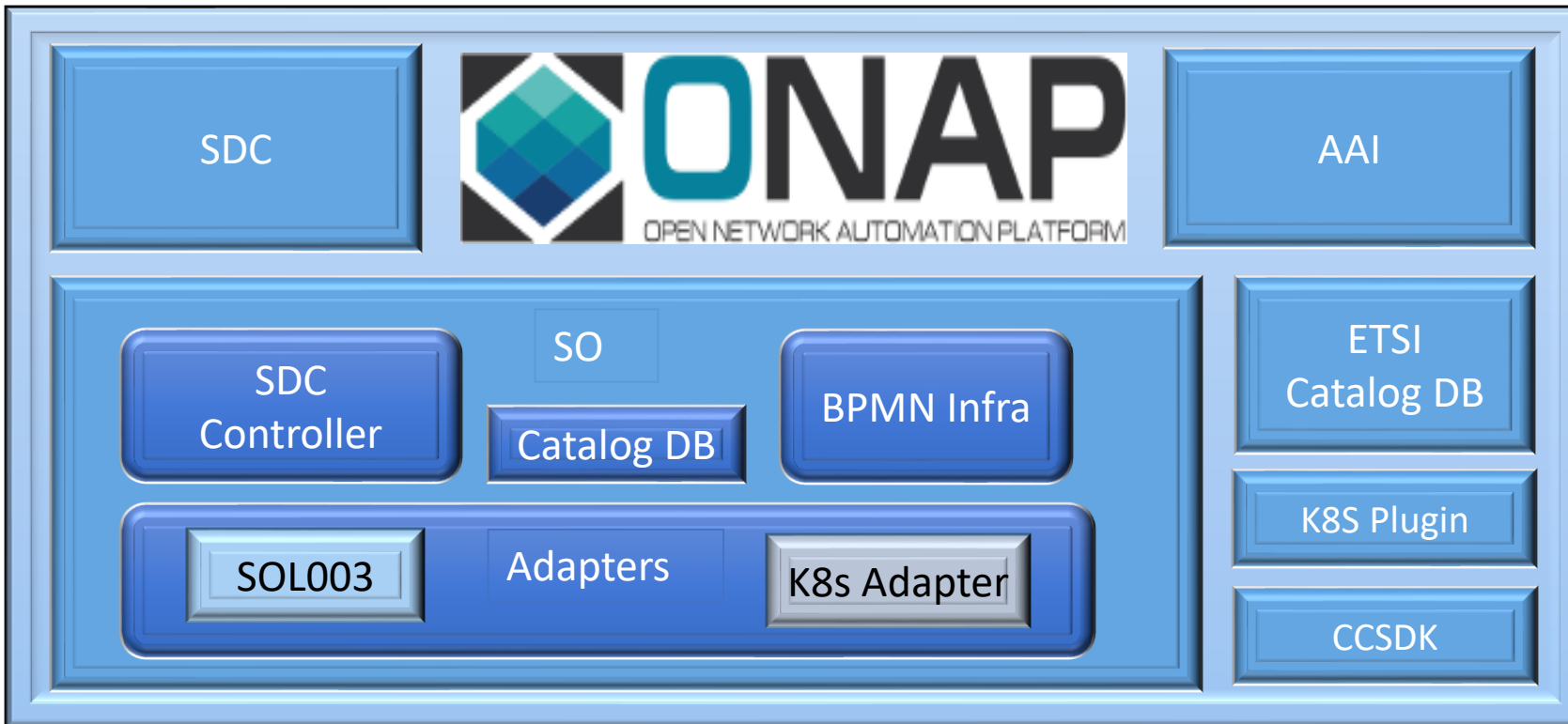
Proposed scope for REQ-341 - Honolulu+ (2)

REQ-341

- Integration of K8s API v2 -> Investment for the future development
 - Configuration API for v2
 - v2 in OOM + adaptation of existing helm charts for NFR
 - SO CNF adapter must be changed in SO
 - ArtifactBroker must be modified for v2 or replaced by CNF adapter distribution
 - Native Profile Handler in CDS must be switched into v2
 - v2 in ONAP python-sdk?
- CCSDK/CDS
 - Native Configuration API Handler for v1 or v2
 - Native Status API Handler for v1 or v2
- Dedicated CNF Health Check Workflow in SO
 - Status Check -> Status API result verification
 - CNF Health Check with Dedicated Health Check Job Execution
- **We may want to switch to another pure CNF use case**
 - CNF use case CBA + Integration scripts
 - Reference Health Check Job Implementation for selected CNF use case
 - **Prometheus for collection of metrics**



ONAP CNF Orchestration – Honolulu Impact



SDC:

On-board the helm and process it as an artifacts of the CSAR to be distributed

- ✓ On-board Helm Charts (Continuation)
- ✓ Helm Validation in SDC (Stretch)

SO:

Won't consume the Helm by itself but parse it and push it forward to other ONAP components

- ✓ Parse the CSAR, extract helm
- ✓ SOL003 adapter enhancements
- ✓ K8s Adapter – v2 + Status API
- ✓ Distribution of Helm from CNF adapter (Optional)

K8s Plugin:

- ✓ Configuration API in v2
- ✓ Artifact Broker supports v2
- ✓ v2 in OOM

AAI:

- ✓ Persist k8s instance identifier
- ✓ Persist k8s resources ID created from Helm
- ✓ Expose Status API result

CCSDK:

- ✓ Native support of Configuration API
- ✓ Native Support of Status API
- ✓ Adaptation for v2

ETSI Catalog DB:

- ✓ Persist the ETSi VNFM data (IFA-29 and IFA-40)
- ✓ Persist Images

External (S)VNFM

Model to drive the flows:

- ✓ SDC to denote the flow of which VNFM should be used - similar to Orchestration Type
- ✓ Information model – optional
- ✓ Need to investigate the best place to have the meta data, we can perhaps use the existing fields

Thank You!