

REQ-627 – CNFO – Istanbul Extensions

Lukasz Rajewski (Orange)

Seshu Kumar M (Huawei)

Konrad Banka (Samsung)

CNFO - Summary for the requirement subcommittee

Executive Summary - Provide CNF orchestration support through integration of K8s adapter in ONAP SO

- Support for provisioning CNFs using an external K8s Manager
- Support the Helm based orchestration
- leverage the existing functionality of Multi cloud in SO
- Bring in the advantages of the K8s orchestrator
- Set stage for the Cloud Native scenarios

Owners: Lukasz Rajewski (Orange), Seshu Kumar M (Huawei)

Business Impact - Enables operators and service providers to orchestrate CNFs based services along with the VNFs and PNFs

Business Markets - All operators and service providers that are intended to use the CNFs along with PNFs /VNFs

Funding/Financial Impacts - Reduction in the footprint of the ONAP for CNF support.

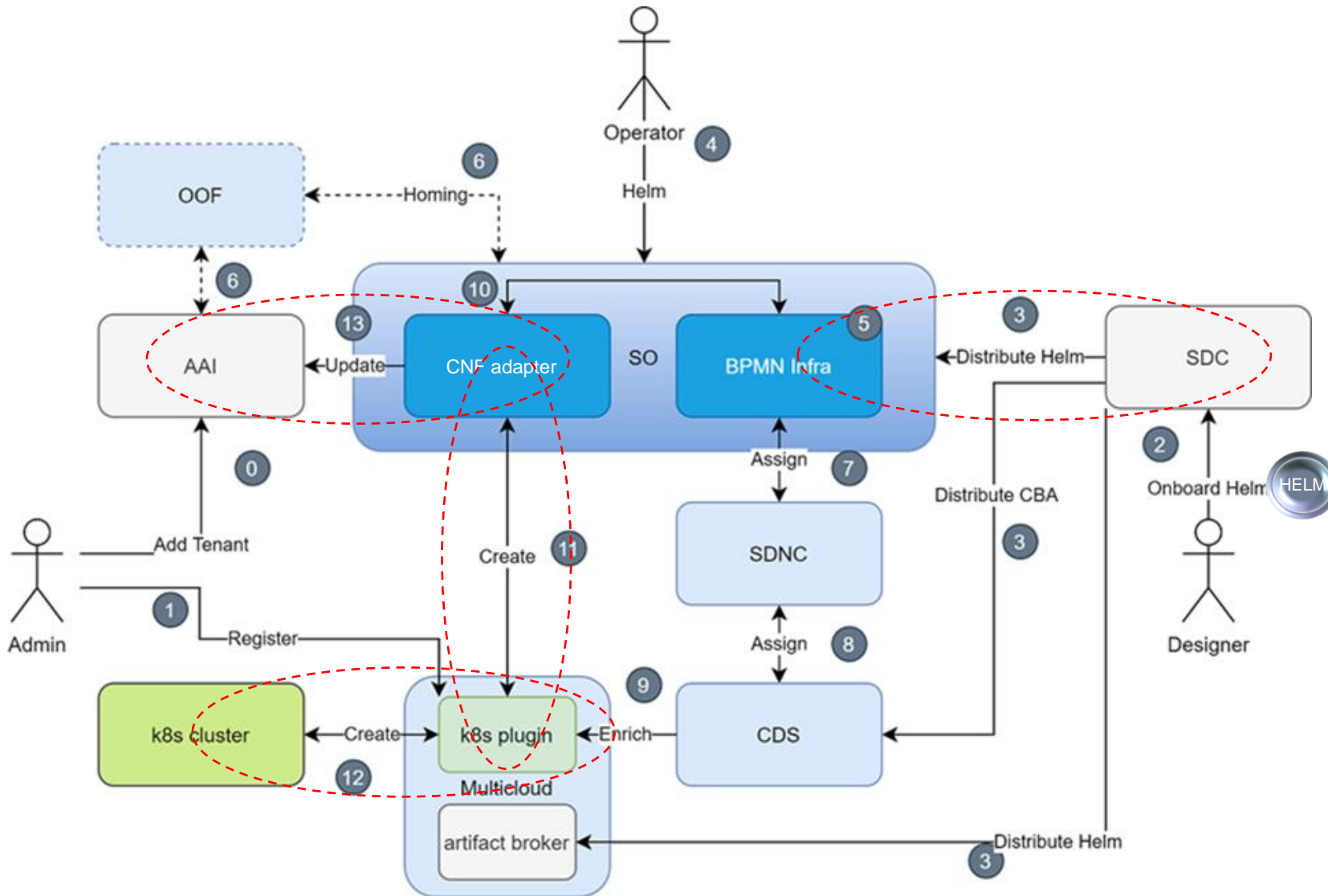
Organization Mgmt, Sales Strategies - *There is no additional organizational management or sales strategies for this requirement outside of a service providers "normal" ONAP deployment and its attendant organizational resources from a service provider.*

REQ-341
Guilin

REQ-458
Honolulu

REQ-627
Istanbul+

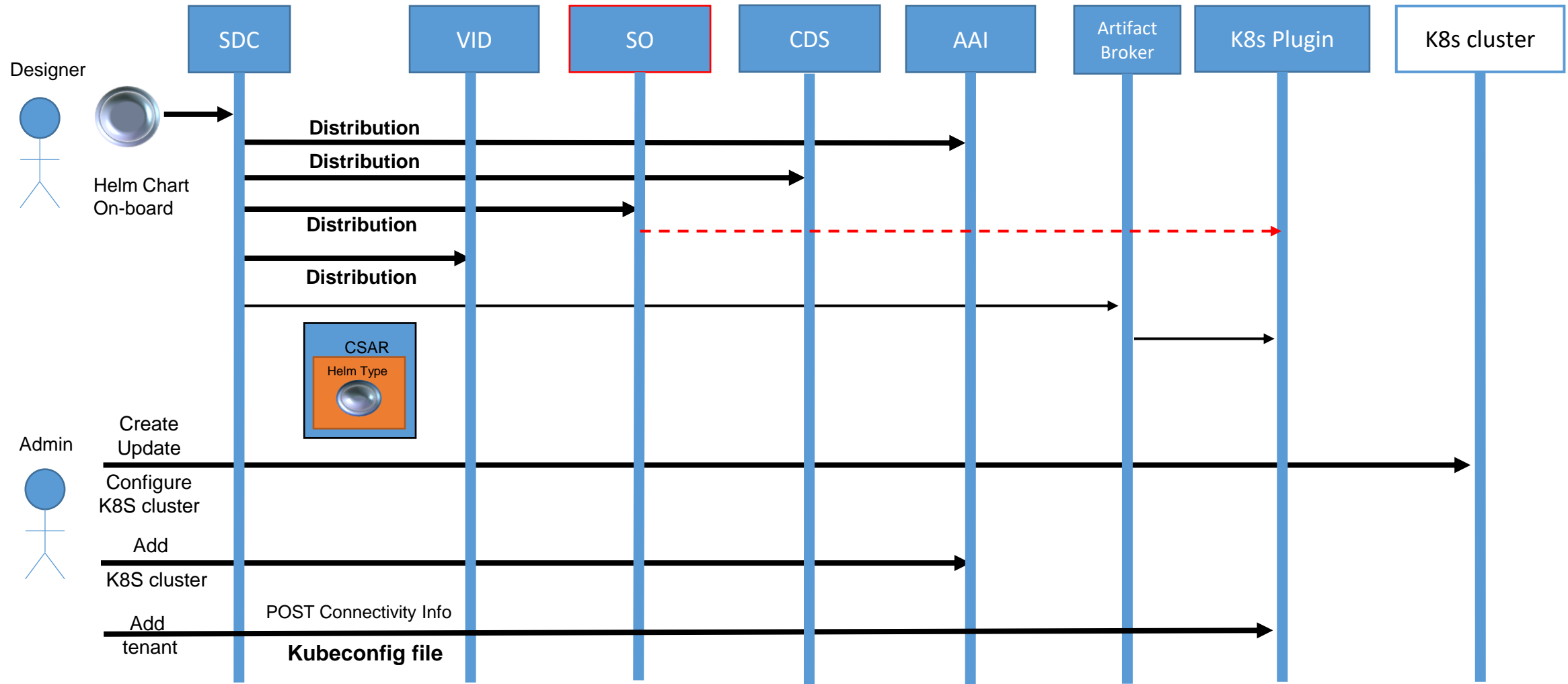
Honolulu - CNF Adapter Instantiation Flow



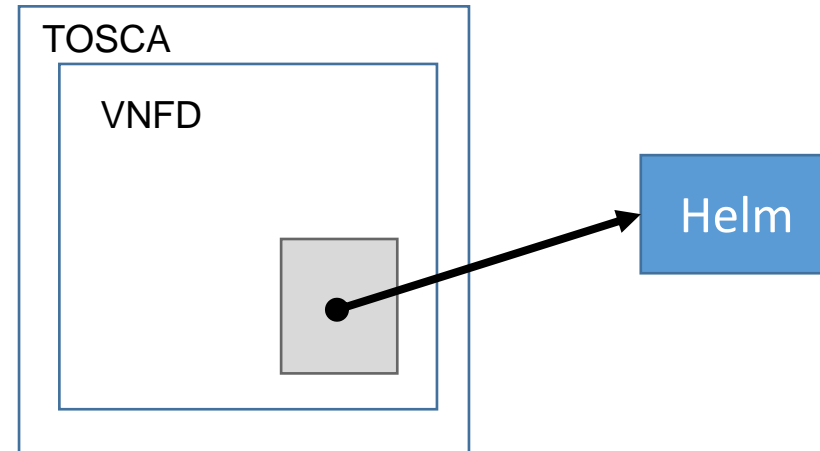
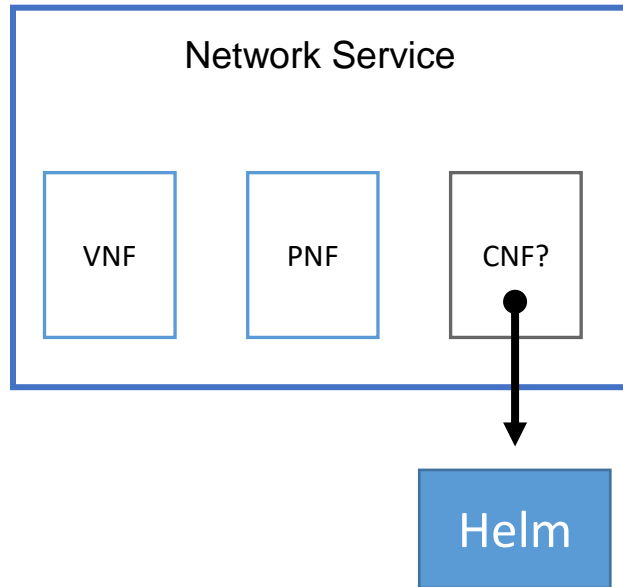
Deployment Maturation and Day2

- Improvement of Helm Distribution (SDC/SO)
- Helm Deployment Maturity
 - Helm package validation
 - Helm 3.5
 - Helm pre-/post-installation/deletion hooks
- Simple CNF Healthcheck
- AAI Basic CNF Changes

Istanbul - Design and Distribution of the Helm Chart - Day 0



ONAP - ETSI CNF model Alignment



Integration of Native (CNF Adapter) with ETSi (SOL003 Adapter) paths in SO



Design/AAI CNF Model

How the ETSI CNF AAI model will look?

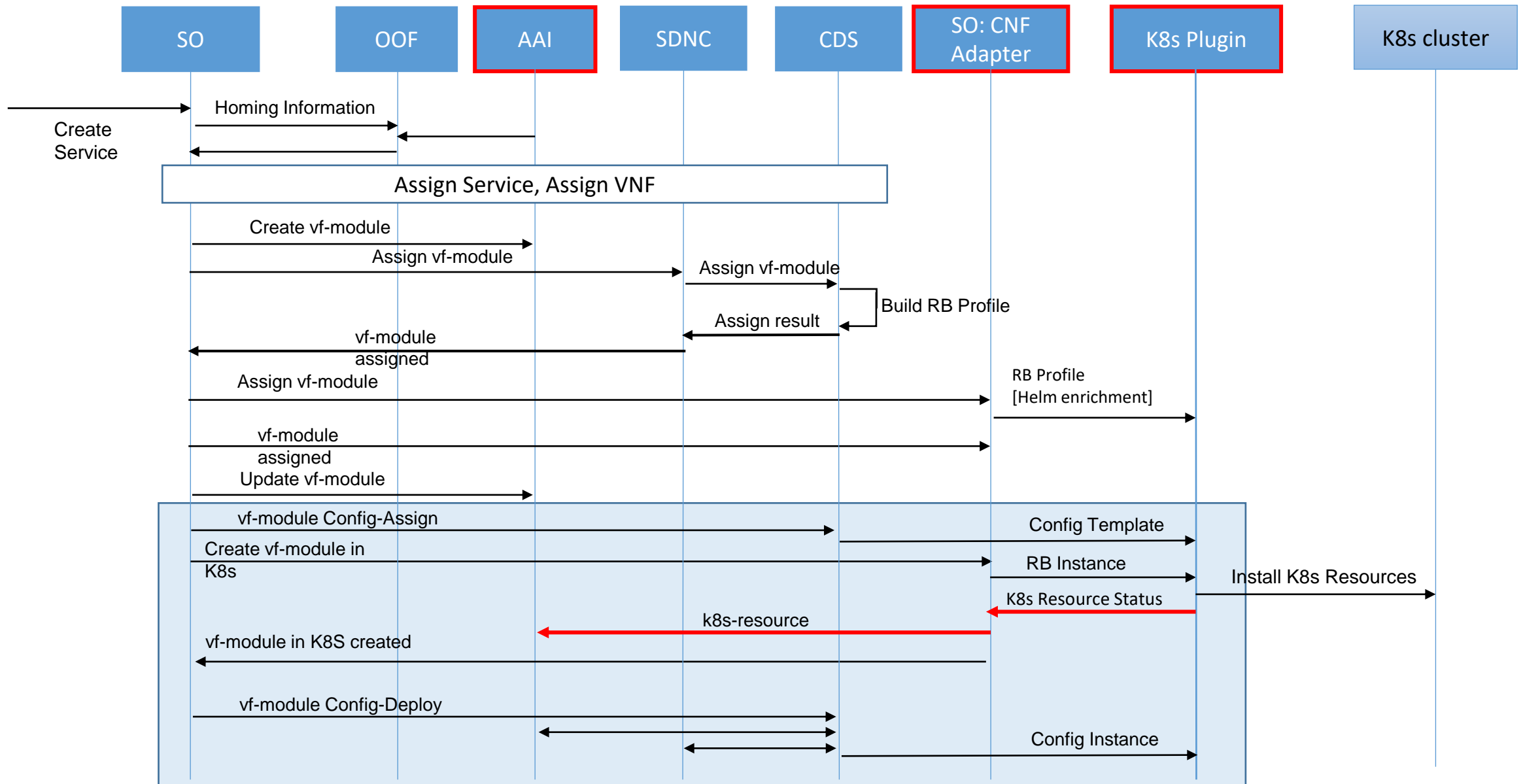
AAI CNF Model – Overview

- Currently no CNF Resources information is visible in ONAP AAI
- Some interfaces are already implemented (Multicloud-k8s Status/Query API) that allow retrieval of detailed resources information
- Initial implementation of CNF Model in AAI (**Istanbul**) be simple and allow user to know about resources available and where to get their exact status from
- Long-Term solution (Jakarta+) should design appropriate CNF Resources in AAI, providing only the most important data and relationships about them.
 - To be aligned with ETSi CNF deployment

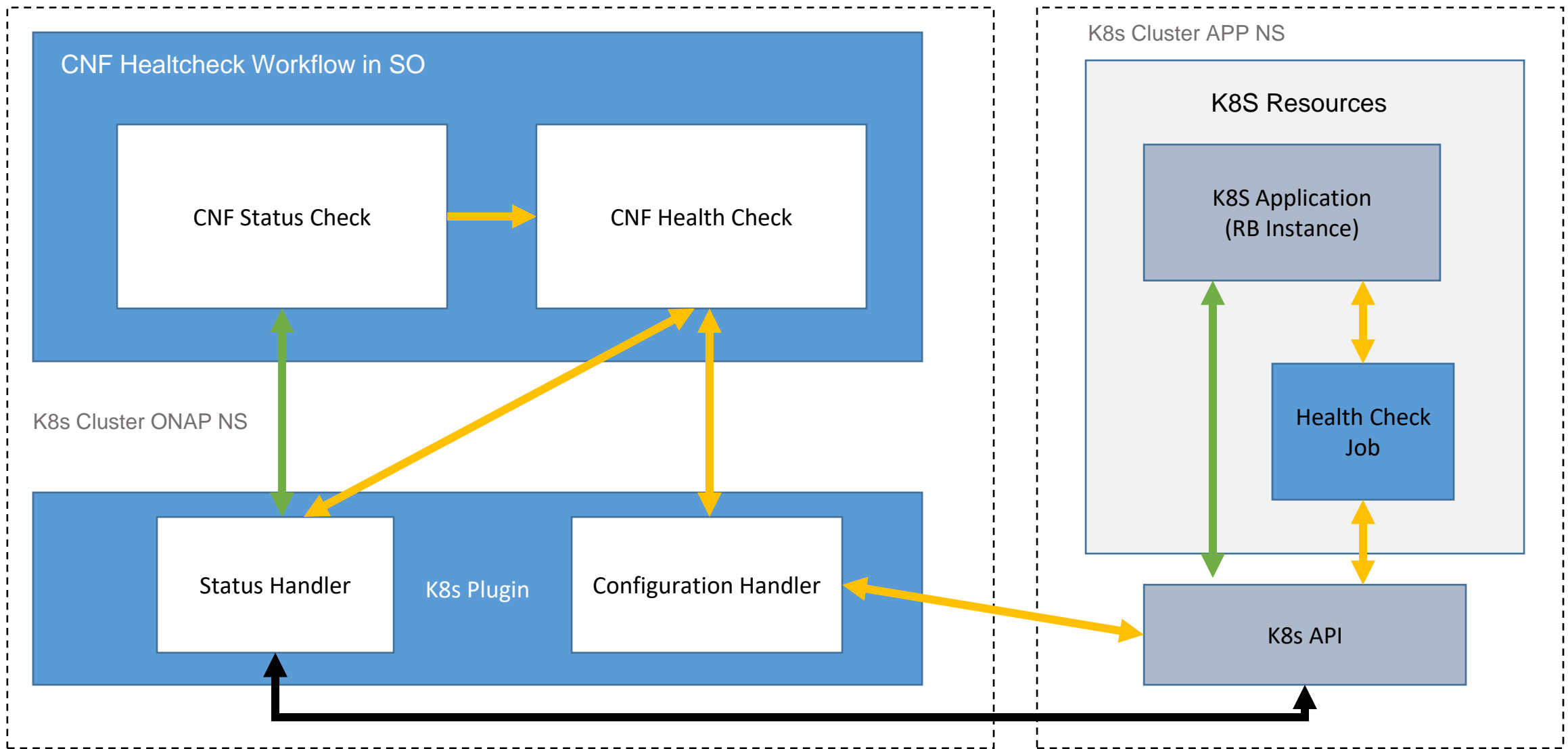
Simple AAI CNF Model – Istanbul

- Create additional AAI Object (k8s-resource) storing information about **ANY** Resource in K8s
- Data stored within this AAI object:
 - `id` [guid; **Primary Key**]
 - `name` [string; **Alternate Key**]
 - `group, version, kind` [string; **Alternate Key**]
 - `namespace` [string; **Alternate Key**; Empty-allowed]
 - `labels` [list<string>]
 - `k8s-resource-selflink` [string]
- Role and positioning like vservers object
- Selflink leads to SO/CNF-Adapter – it allows to read full and latest status information of k8s resource

Instantiation of the Helm Chart – Day 0/1



On-Demand CNF Health Check SO WorkFlow



Summary of API Changes

- [Multicloud/K8s] Query API endpoint also on root API level - not related with any Instance.
- [Multicloud/K8s] API endpoints for Status/Query Subscription mechanism
- [Multicloud/K8s] Instance API has new params to control execution of Helm Hooks
- [Multicloud/K8s] Information about Hooks on Instance and Status results but only when additional query param specified
- [AAI] API – k8s-resource object in cloud-infrastructure sub-tree
- [SO] CNF Adapter – API endpoints for Status/Query API to read status of k8s-resources
- [SO] Northbound API endpoint for execution of healthcheck workflow

Scope for REQ-627 – Istanbul

- SDC Enhancements
 - Validation of Helm 3 package
 - Improvements in Helm distribution (stretch)
- AAI model changes (stretch)
 - K8s-Resource (name, version, kind, labels, annotations, namespace)
 - Similar role to vserver object for VNF
- K8sPlugin Helm Deployment Improvements
 - Query API for cluster resources
 - Helm 3 support
 - Pre-/Post Installation/Deletion Hooks
 - Query/Status API notifications (stretch)

REQ-627



Scope for REQ-627 – Istanbul

- SO Enhancements
 - Status/Query API Integration in CNF Adapter
 - HealthCheck API Integration
 - Dedicated CNF Health Check Workflow in SO
 - Status Check
 - Test Jobs Execution
 - AAI synchronization after changes (stretch)
 - + Based on publish/subscribe
 - CNF Creation with status verification
 - CNF Tenant recognition (stretch)
 - Distribution of Helm package by CNF Adapter (stretch)

REQ-627

